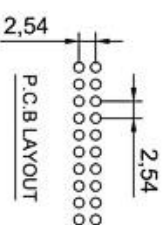
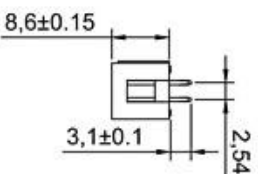
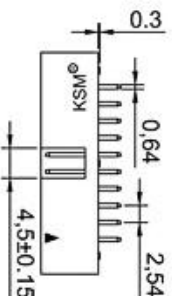
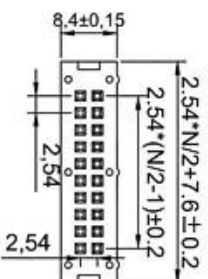




N=PIN数

Material
Insulator: Glass filled PBT (UL 94V-0)
Contact : Brass
Surface Coating:GOLD Over Nickel

Electrical Characteristics
Current rating:1.5Amps
Dielectric Withstanding Voltage:AC 500V for 1 Minute.
Insulator Resistance:1000MΩ Min.
Contact Resistance:20mΩ Max.
Operating Temperature:-40°C~+105°C



- DC3-2.54-6P直 DC3-2.54-8P直
- DC3-2.54-10P直 DC3-2.54-12P直 DC3-2.54-14P直
- DC3-2.54-16P直 DC3-2.54-18P直 DC3-2.54-20P直
- DC3-2.54-24P直 DC3-2.54-26P直 DC3-2.54-30P直
- DC3-2.54-34P直 DC3-2.54-40P直 DC3-2.54-50P直
- DC3-2.54-60P直 DC3-2.54-64P直